


Save a show remotely

To take control of your controller from internet you need first to add it to your account on the local network and then connect it to the internet (refer to Wi-Light 2_Online manual).

You need to use a different internet access to take control of your controller from internet.

Start PRO DMX 2

Start PRO DMX 2 software and select WEB connection:



The screenshot shows the PRO DMX 2 software interface. At the top left is a UK flag icon. The main title is "PRO DMX 2" with a logo above it. The version is "Version 2.0.5". Below the title are three connection options: USB (unchecked), LAN (unchecked), and WEB (checked). Below these are input fields for "Wi-Fi : 192.168.43.58", "user", and "password". At the bottom are two large buttons: "PLAYER" and "PRO", both with orange arrows pointing right, and a red "X" button. A "Don't show next time" checkbox is at the bottom left.

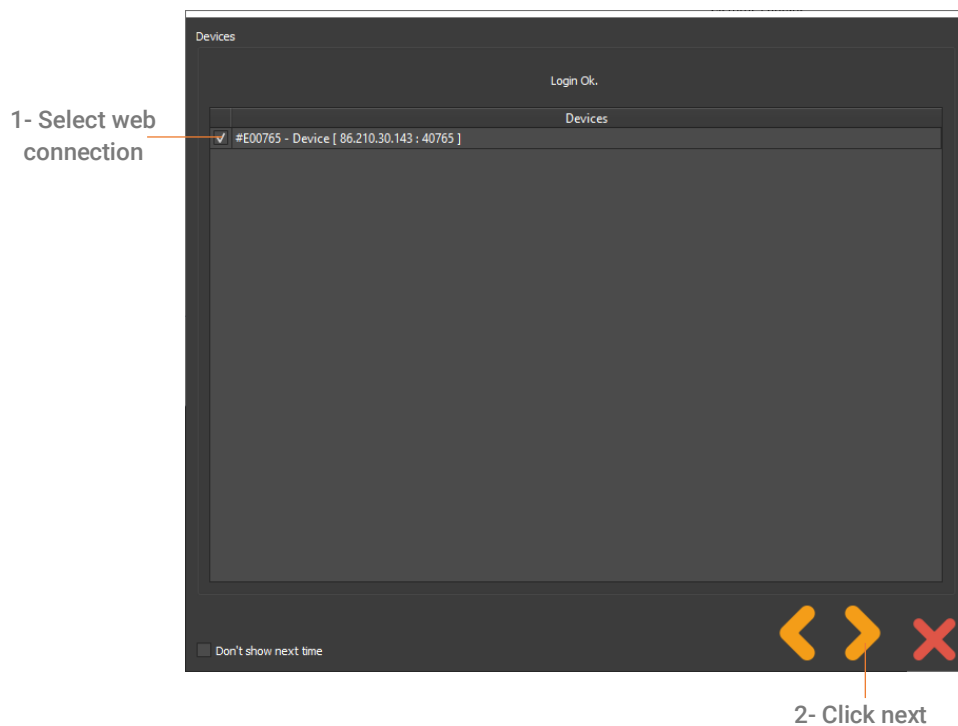
1- Select web connection

2- Enter your ID and password

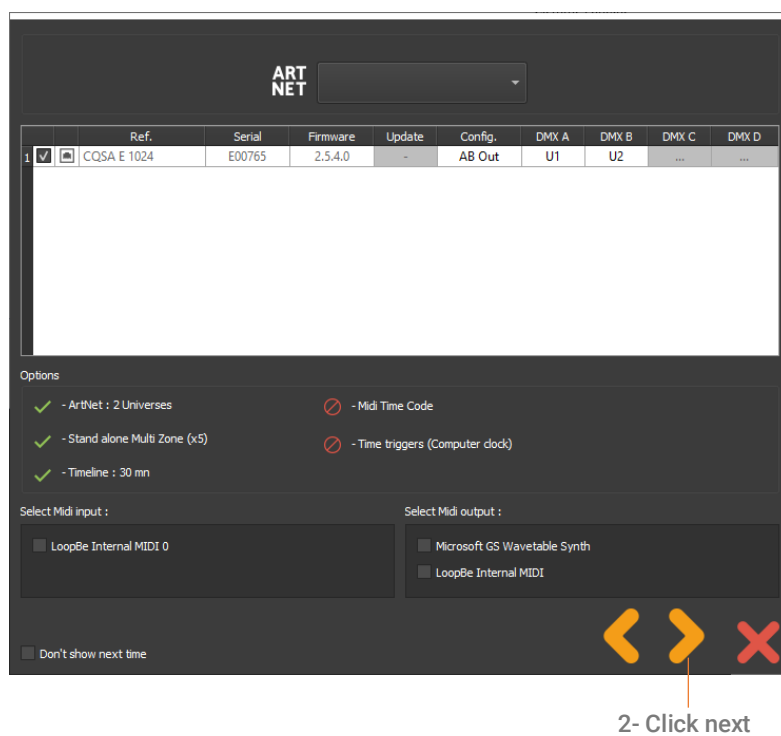
3- Select the good network card

4- Select PLAYER or PRO to start in the desired mode

Choose your interface:



Now it will be the same as USB or LAN connection

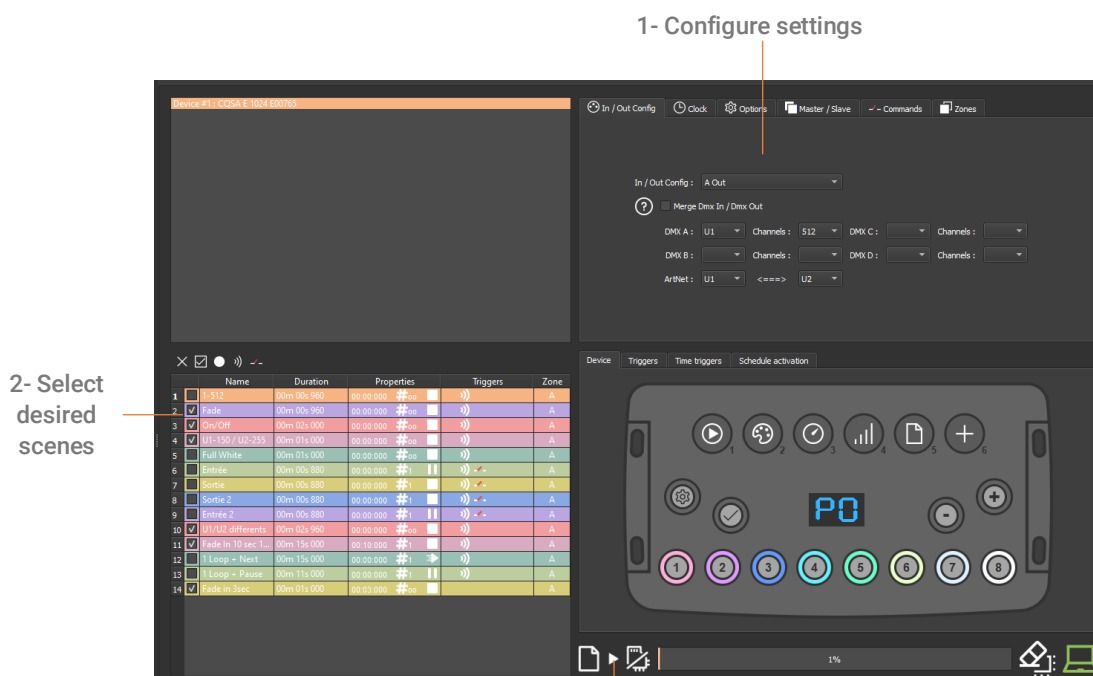


Save a show in memory

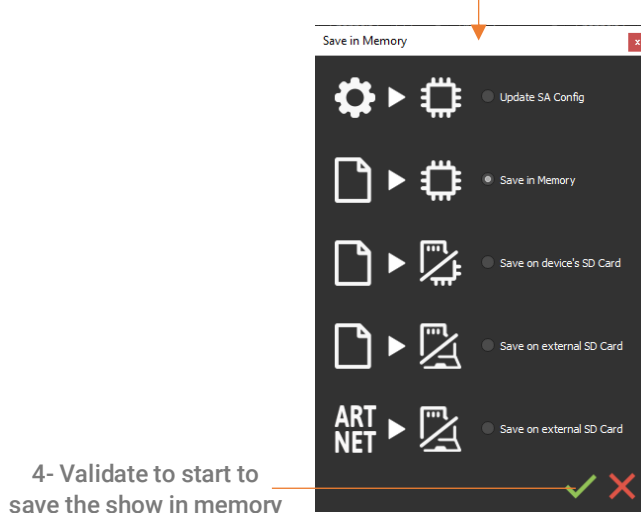
When your show is ready to be saved in memory go to the “Standalone” windows



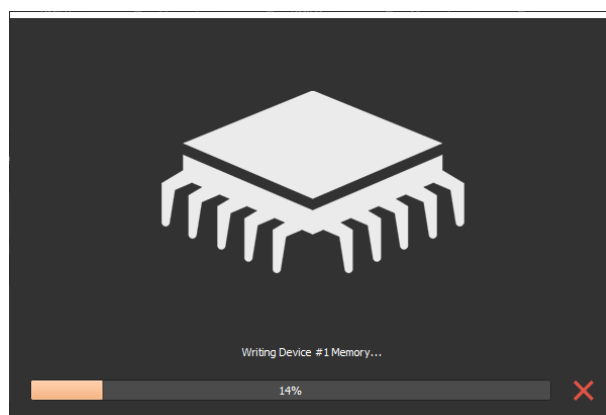
Choose settings and scenes you want to save in Standalone :



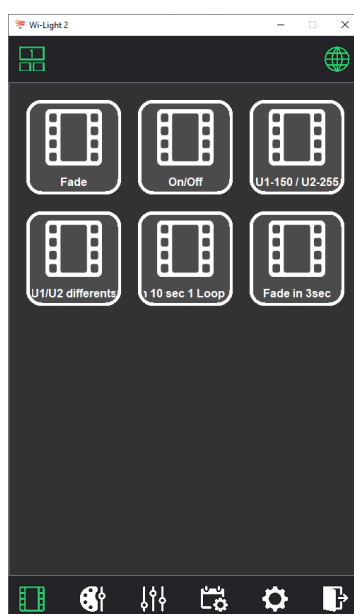
3- Click to Save in Memory



Wait until the end of writing :



Now the show is saved in memory, you can close PRO DMX 2 and check with Wi-Light-2 your scenes in the controller.



Troubleshooting

- If you are unable to detect the interface on internet, try to save a scene in memory by USB or LAN and retry to connect by WEB.
- If you can't start the save in memory procedure check if the controller is still connected to the software on top right in the software:

Connection is good



Connection is lost



If the connection is lost restart the software and reconnect to the controller.

Check Wi-Light 2_Online manual troubleshooting section to solve local network problem.